

Light efficiency:

105 Lumen/Watt

Color temperature:

4111 K

Light quality:

CRI:94.1, R_g:96.5, R_r:89.5

P: 2 / V: - / F: 3

Output: 3024 lm

Peak: 6627 cd

Power: 28.8 W

Voltage: 119 V

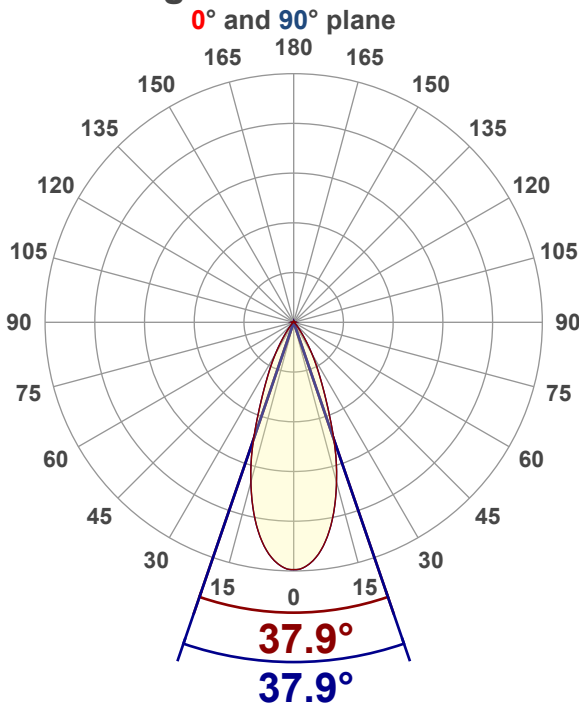
Current: 0.247 A

PF: 0.98

THD: 8.45 %



Angular Distribution



Product name:

RA35P-16CTR-M2P2SXXX

Test Date:

9/29/2025

Beam Angle (50% of the brightness of the centre):
37.9°

Field Angle (10% of the brightness of the centre):
65.4°

Cut Off Angle (2.5% of the brightness of the centre):
81.9°

Beam Details

*measured at centre of beam

Mounting Height (feet)/(meter)	Lux*	Footcandles*	Beam width (feet) / (meter)
4 ft / 1.2 m	4458 lx	414 fc	2.7 ft / 0.8 m
8 ft / 2.4 m	1115 lx	104 fc	5.5 ft / 1.7 m
12 ft / 3.7 m	495 lx	46 fc	8.2 ft / 2.5 m
16 ft / 4.9m	279 lx	26 fc	11 ft / 3.3 m
20 ft / 6.1m	178 lx	17 fc	13.7 ft / 4.2 m

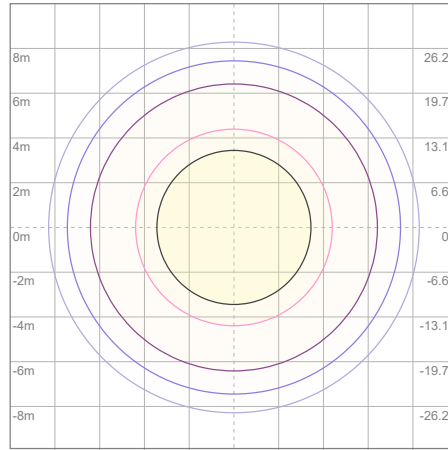
Beam center

Photometric Testing Report

Zonal Lumen Summary

Zone	Lumen	%Luminaire
0-30	2606	86.18%
0-40	2908	96.16%
0-60	3011	99.57%
60-90	9.54	0.32%
70-100	2.03	0.07%
90-120	0.320	0.01%
0-90	3020	99.87%
90-180	3.62	0.12%
0-180	3024	100.00%

ISO Lux Diagram



Lux at center:	712 lx
3%	21.36 lx
5%	35.60 lx
10%	71.20 lx
30%	213.60 lx
50%	356.00 lx

Conditions:
 Number of planes: 4
 Lux distribution on a surface when lamp is mounted at 3.05 meters from the surface.

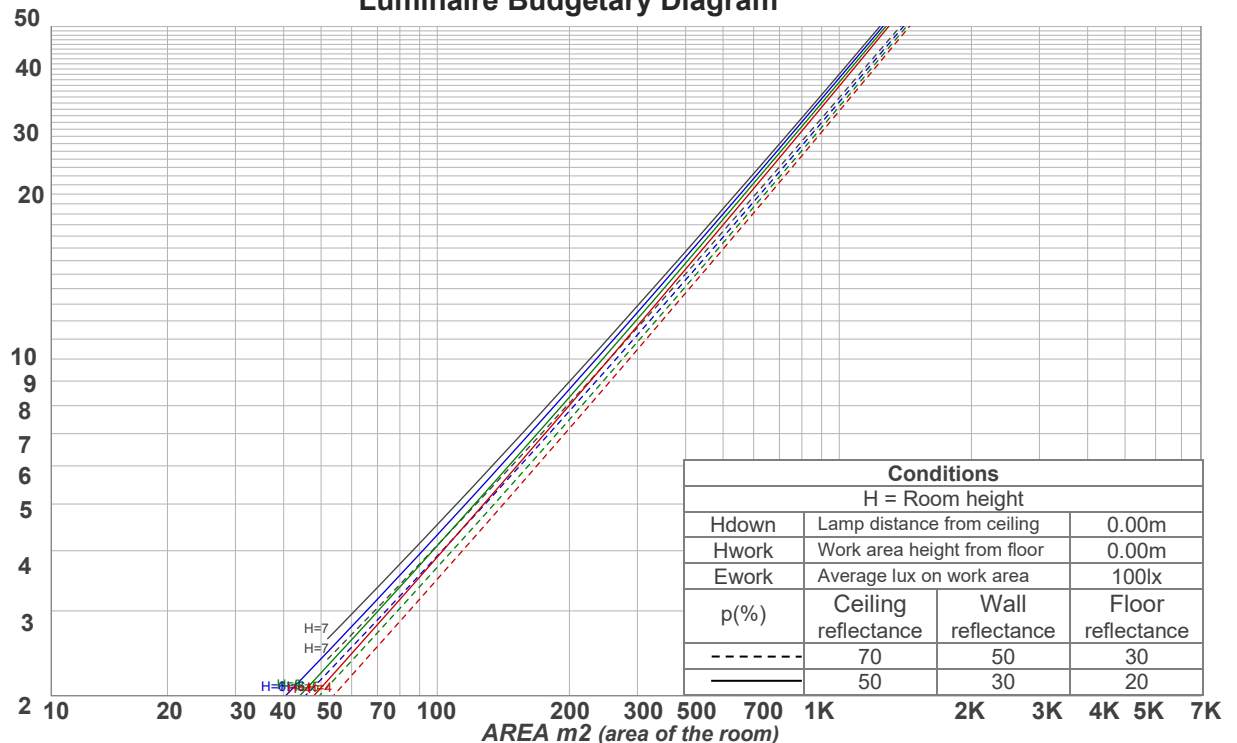
Mounting height: 3.05 meters (10 feet)

Coefficients of Utilization

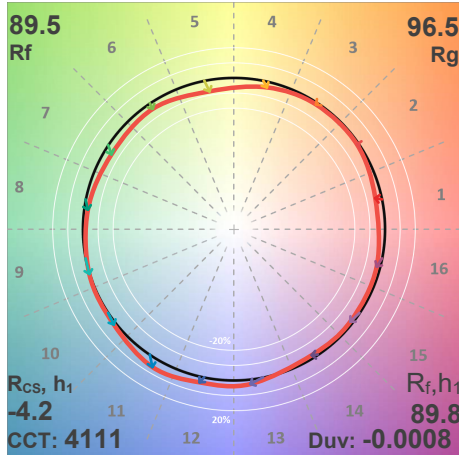
Ceiling reflectance	80				70				50			30			10			0
	70	50	30	10	70	50	30	10	50	30	10	50	30	10	50	30	10	0
Wall reflectance	70	50	30	10	70	50	30	10	50	30	10	50	30	10	50	30	10	0
Floor reflectance	20	20	20	20	20	20	20	20	20	20	20	20	20	20	20	20	20	0
RCR	(RCR: Room Cavity Ratio)																	
	Room Values are expressed as percentage of Lumens delivered to the task surface																	
0	119	119	119	119	116	116	116	116	111	111	111	106	106	106	102	102	102	100
1	114	112	110	108	112	110	108	106	106	104	103	102	101	100	98	98	97	95
2	110	105	102	99	107	104	100	98	100	98	96	97	95	94	95	93	92	90
3	105	99	95	92	103	98	94	91	96	92	90	93	90	88	91	89	87	85
4	101	94	90	86	99	93	89	85	91	87	84	89	86	83	87	85	83	81
5	97	90	85	81	95	89	84	81	87	83	80	85	82	79	84	81	79	77
6	93	85	80	77	92	85	80	76	83	79	76	82	78	75	81	77	75	74
7	89	81	76	73	88	81	76	73	80	75	72	78	75	72	77	74	71	70
8	86	78	73	69	85	77	72	69	76	72	69	75	71	69	74	71	68	67
9	83	75	70	66	82	74	69	66	73	69	66	72	68	66	72	68	65	64
10	80	72	67	63	79	71	66	63	70	66	63	70	66	63	69	65	63	62

LAMPS (number of lamps)

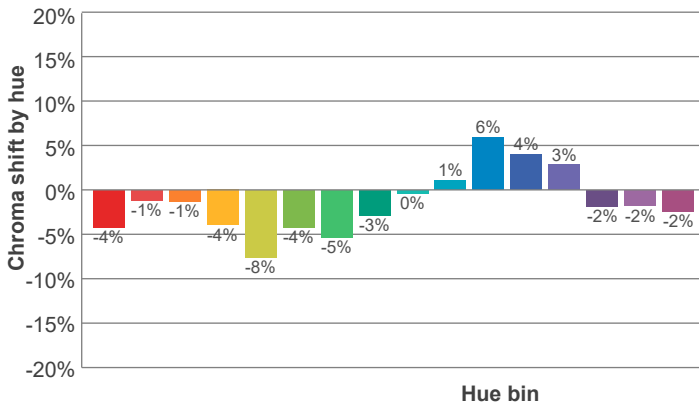
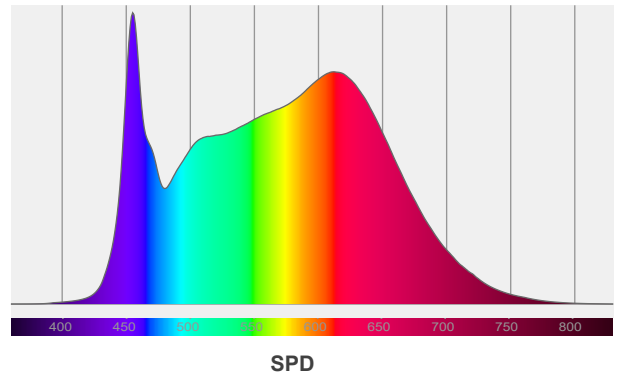
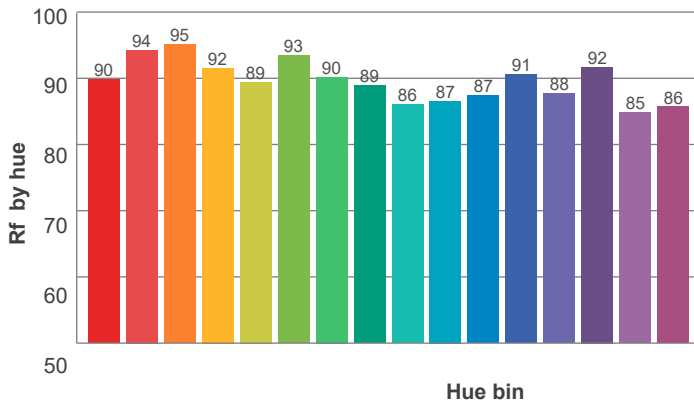
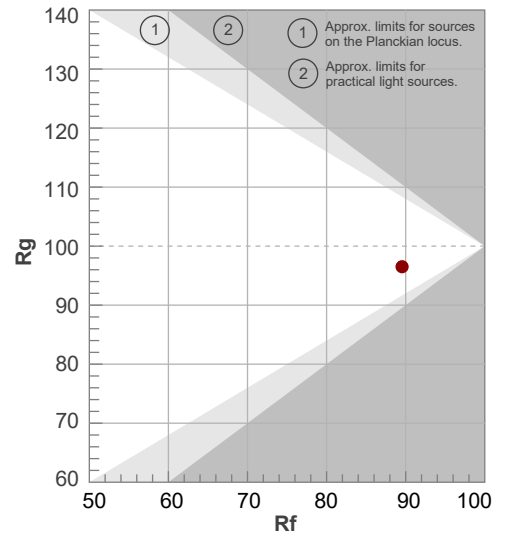
Luminaire Budgetary Diagram



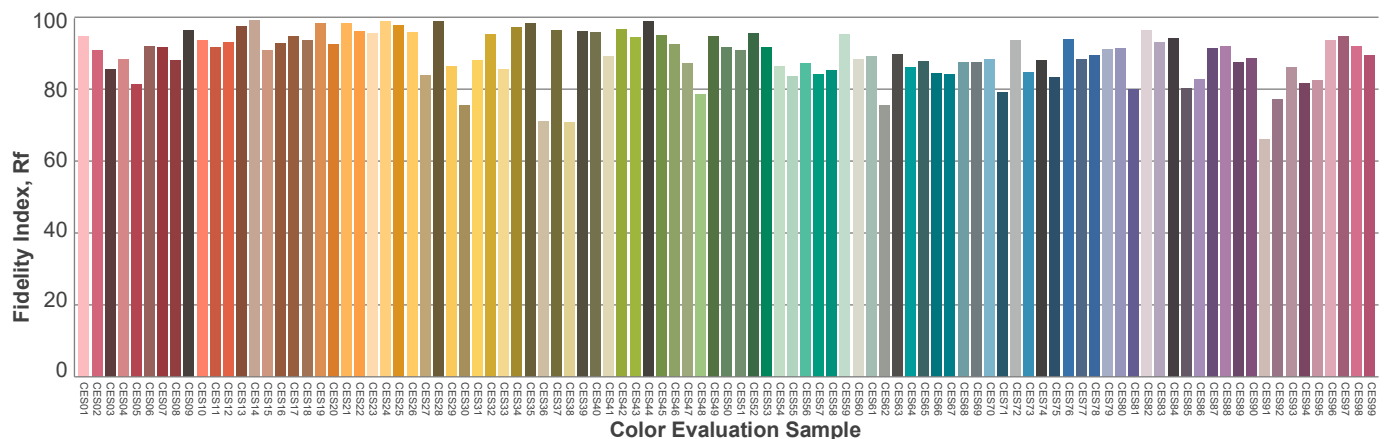
ANSI/IES TM-30-18 P: 2 / V: - / F: 3



Hue Bin	R _f	Shifts (%)	
		Chroma	Hue
1	90	-4%	2%
2	94	-1%	1%
3	95	-1%	1%
4	92	-4%	-3%
5	89	-8%	-2%
6	93	-4%	0%
7	90	-5%	4%
8	89	-3%	6%
9	86	0%	11%
10	87	1%	9%
11	87	6%	6%
12	91	4%	-2%
13	88	3%	-9%
14	92	-2%	-4%
15	85	-2%	-8%
16	86	-2%	-6%



Red: 27.9%, Power=20.1mW
 Blue: 16.9%, Power=33.8mW
 Green: 28.4%, Power=38.9mW
 UVA: 0%, Power=0.0mW
 Dominant Wavelength: 582nm
 1st Peak Wavelength: 455nm
 2nd Peak Wavelength: 611nm



Glare Evaluation According to UGR

Corrected, comprehensive UGR table according to 117-1995, S/H ratio=0.25

p Ceiling		70	70	50	50	30	70	70	50	50	30
p Walls		50	30	50	30	30	50	30	50	30	30
p Floor		20	20	20	20	20	20	20	20	20	20
Room size H = mounting height above eye level X Y		Viewing direction at right angles to lamp axis					Viewing direction parallel to lamp axis				
2H	2H	13.5	14.0	13.6	14.2	14.4	13.5	14.0	13.6	14.2	14.4
	3H	13.2	13.9	13.6	14.1	14.3	13.2	13.9	13.6	14.1	14.3
	4H	13.2	13.8	13.5	14.0	14.2	13.2	13.8	13.5	14.0	14.2
	6H	13.2	13.7	13.4	14.0	14.3	13.2	13.7	13.4	14.0	14.3
	8H	13.1	13.6	13.4	13.9	14.3	13.1	13.6	13.4	13.9	14.3
	12H	13.0	13.5	13.4	13.9	14.3	13.0	13.5	13.4	13.9	14.3
4H	2H	13.2	13.8	13.6	14.0	14.3	13.2	13.8	13.6	14.0	14.3
	3H	13.1	13.6	13.4	13.9	14.3	13.1	13.6	13.4	13.9	14.3
	4H	12.9	13.4	13.4	13.8	14.3	12.9	13.4	13.4	13.8	14.3
	6H	12.9	13.4	13.4	13.7	14.0	12.9	13.4	13.4	13.7	14.0
	8H	12.8	13.3	13.3	13.6	14.0	12.8	13.3	13.3	13.6	14.0
	12H	12.7	13.1	13.2	13.5	14.0	12.7	13.1	13.2	13.5	14.0
8H	4H	12.8	13.3	13.3	13.6	14.0	12.8	13.3	13.3	13.6	14.0
	6H	12.7	13.0	13.2	13.5	14.0	12.7	13.0	13.2	13.5	14.0
	8H	12.7	13.0	13.2	13.5	14.1	12.7	13.0	13.2	13.5	14.1
	12H	12.7	12.9	13.3	13.4	14.0	12.7	12.9	13.3	13.4	14.0
12H	4H	12.7	13.1	13.2	13.5	14.0	12.7	13.1	13.2	13.5	14.0
	6H	12.7	13.0	13.2	13.5	14.1	12.7	13.0	13.2	13.5	14.1
	8H	12.7	12.9	13.3	13.4	14.0	12.7	12.9	13.3	13.4	14.0
Variation of the observer position for the luminaire distance S											
S = 1.0H		5.4 / -7.8					5.4 / -7.8				
S = 1.5H		8.0 / -11.5					8.0 / -11.5				
S = 2.0H		10.0 / -13.5					10.0 / -13.5				
Corrected glare indices referring to 3024 lm total luminous flux											

Due to our continued efforts to improve our products, product specifications are subject to change without notice. Please refer to our website for the latest test results.